

RIDING IN THE SLIPSTREAM: PREVENTIVE CONSERVATION WITHIN THE SCOPE OF OCCUPATIONAL SAFETY AND HEALTH

3RD ANNUAL SAFETY AND CULTURAL HERITAGE SUMMIT
PRESERVING OUR HERITAGE AND PROTECTING OUR HEALTH

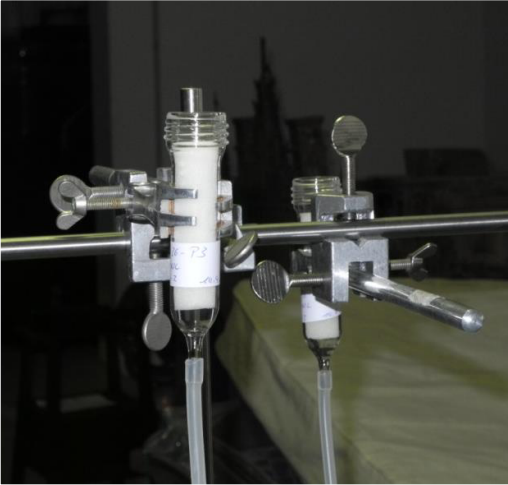


Museum and Archival Storages – Best Practice



Museum and Archival Storages – behind the curtain

Overcrowded rooms and aisles
Pesticides in historic furnitures
Mould contamination of collections



Storages are established in rooms, which are not appropriate for museum and archival collections.

Museum and Archival Storages – behind the curtain

Handling and transport under „difficult“ conditions...



Improvements are urgently required...

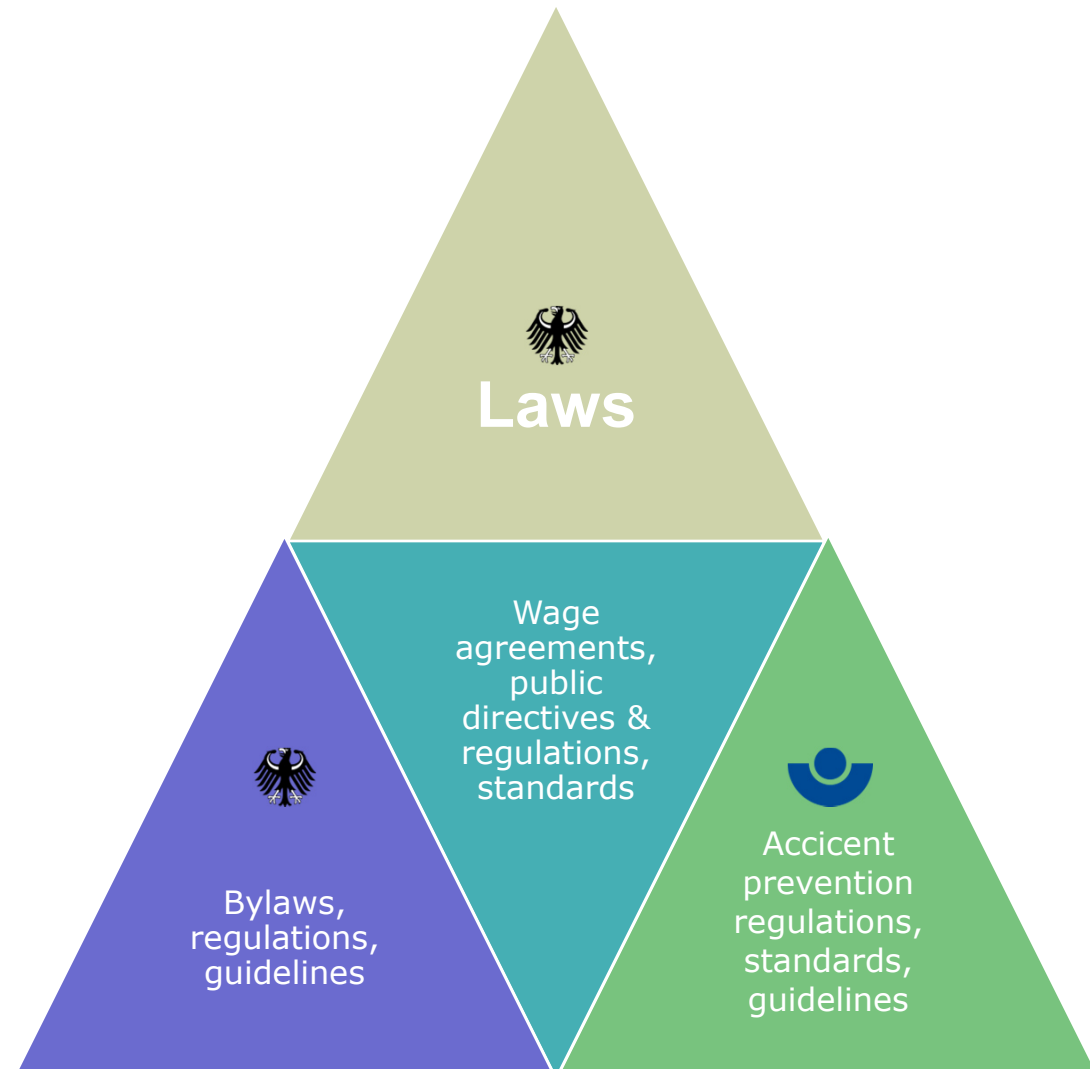
...there is „no pressure to act“ for conservational reasons.

But in terms of occupational safety legal regulations are clear and strong.

The public authority has a legal obligation as employer not as „owner of museum“.

Occupational safety and health has a high priority and is established by a dual occupational safety and health system.

<https://www.dguv.de/en/index.jsp>



Preventive Conservation and Occupational Health – Common Interests

“Riding in the slipstream” of occupational safety and health.

Strategic and conceptual integration of preventive conservation in occupational health

★: Common issue with OSH laws, regulations, and guidelines

Bringing arguments of OSH forward in order to improve also conservational conditions for the collections.



Contaminated Collections and How to Deal with this Problem

Collections can be contaminated:
biocides / pesticides, mould, pests and feces...

Step 1: examination and evaluation

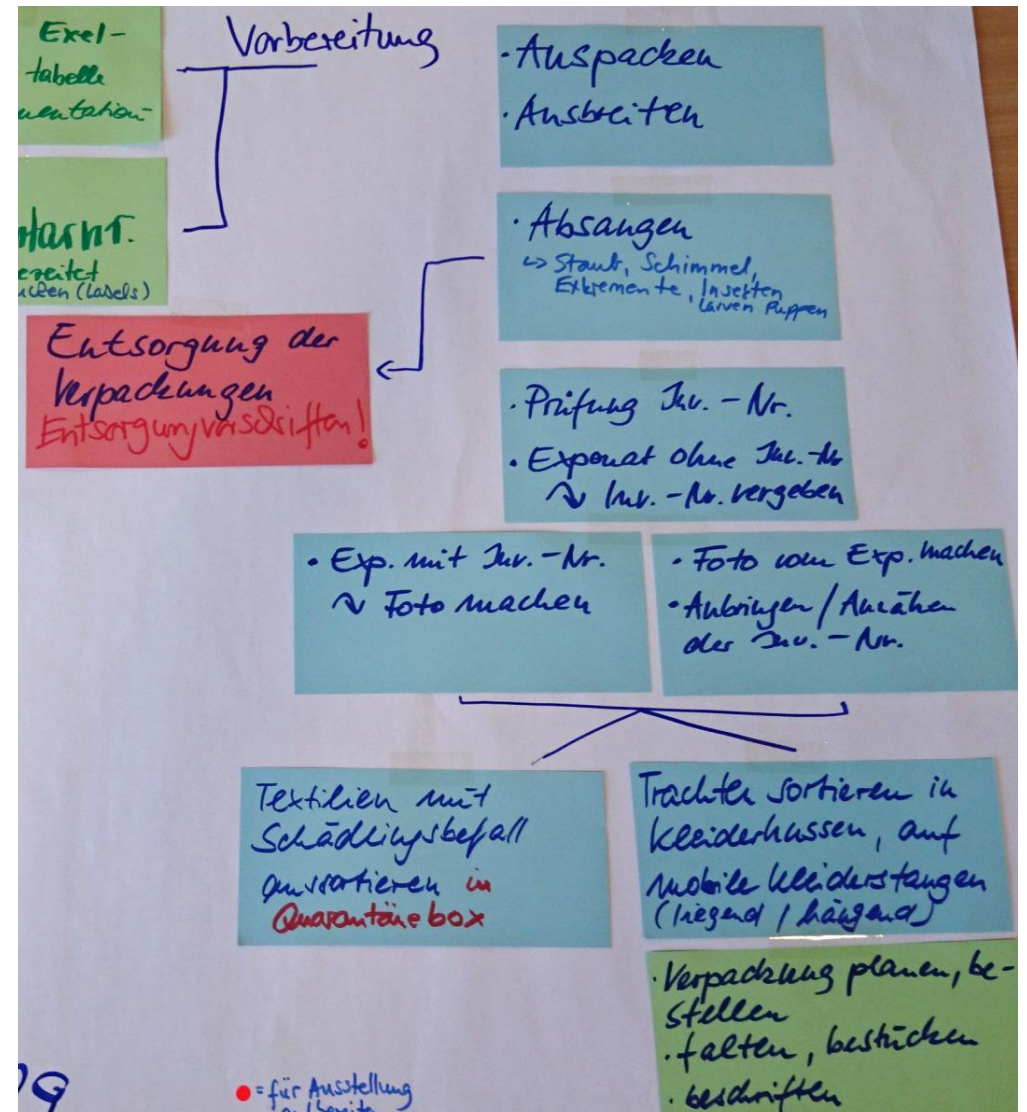
Step 2: integrated job hazard analysis

- Combining protective goals for employees and for objects
- Participatory instruction / schooling for safe handling:

Discussions on necessary works and agreement on safe handling processes

Visualization of processes

Development of safe working systems and working places



Contaminated Collections and How to Deal with this Problem

Collections can be contaminated: biocides / pesticides, mould, pests and feces...

Step 1: examination and evaluation

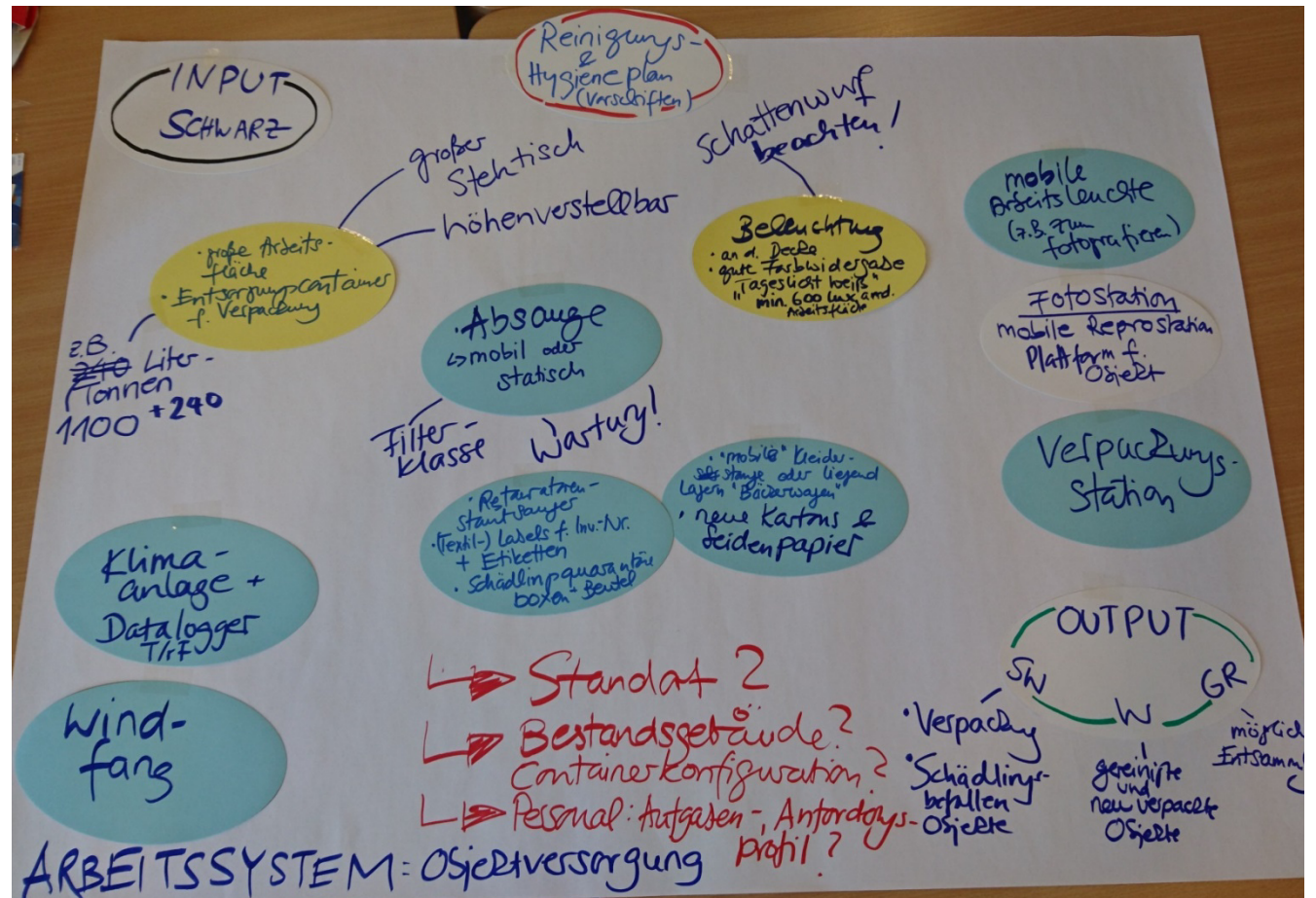
Step 2: integrated job hazard analysis

- Combining protective goals for employees and for objects
- Participatory instruction / schooling for safe handling:

Discussions on necessary works and agreement on safe handling processes

Visualization of processes

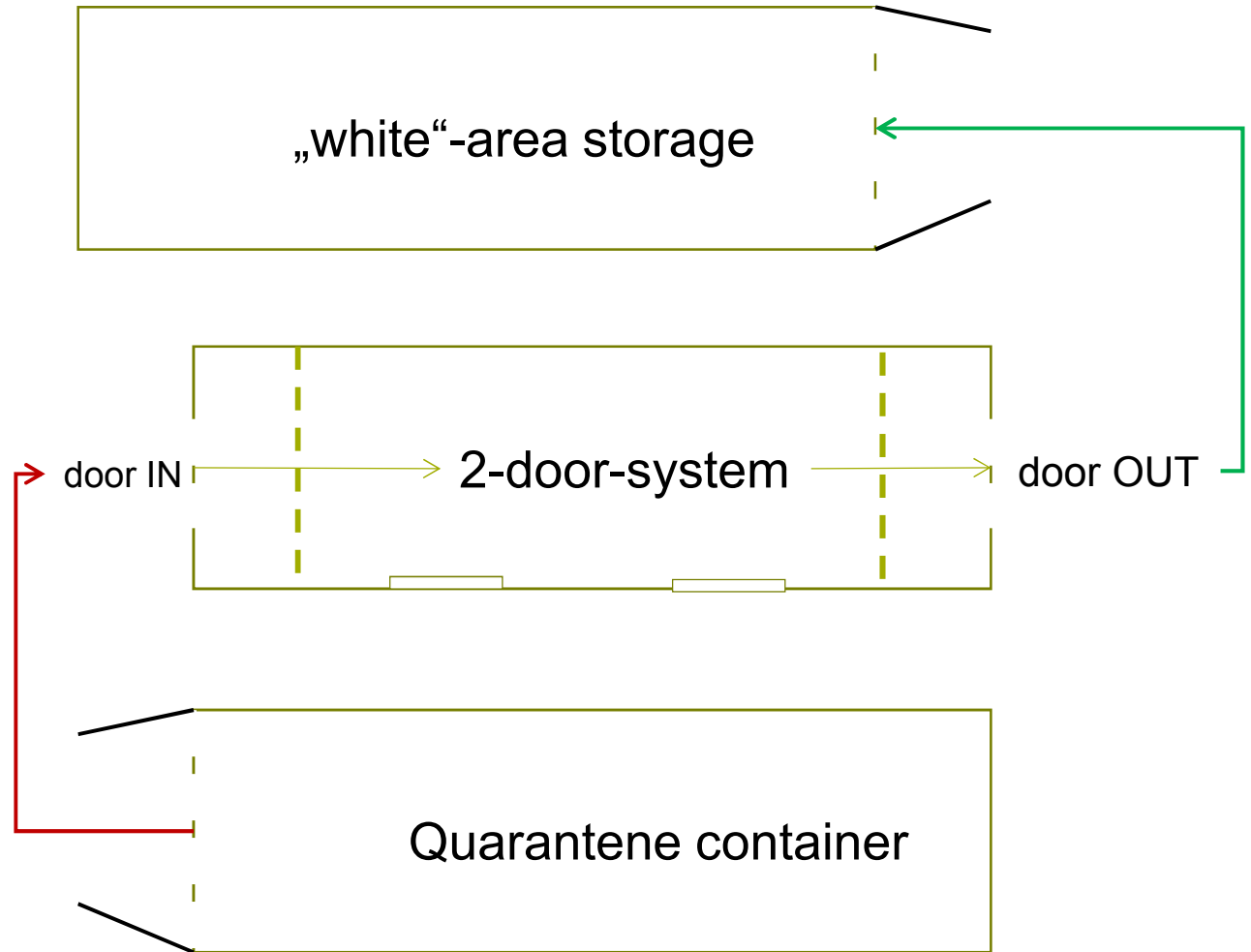
Development of safe working systems and working places



Working Circle / „Learnshop“

Clear room structure and separation of contaminated and clean areas (black-white system)

Safe workflows and safety regulations and guidance on personal protective equipment



Agreed and Confirmed Processes and Safety Instructions

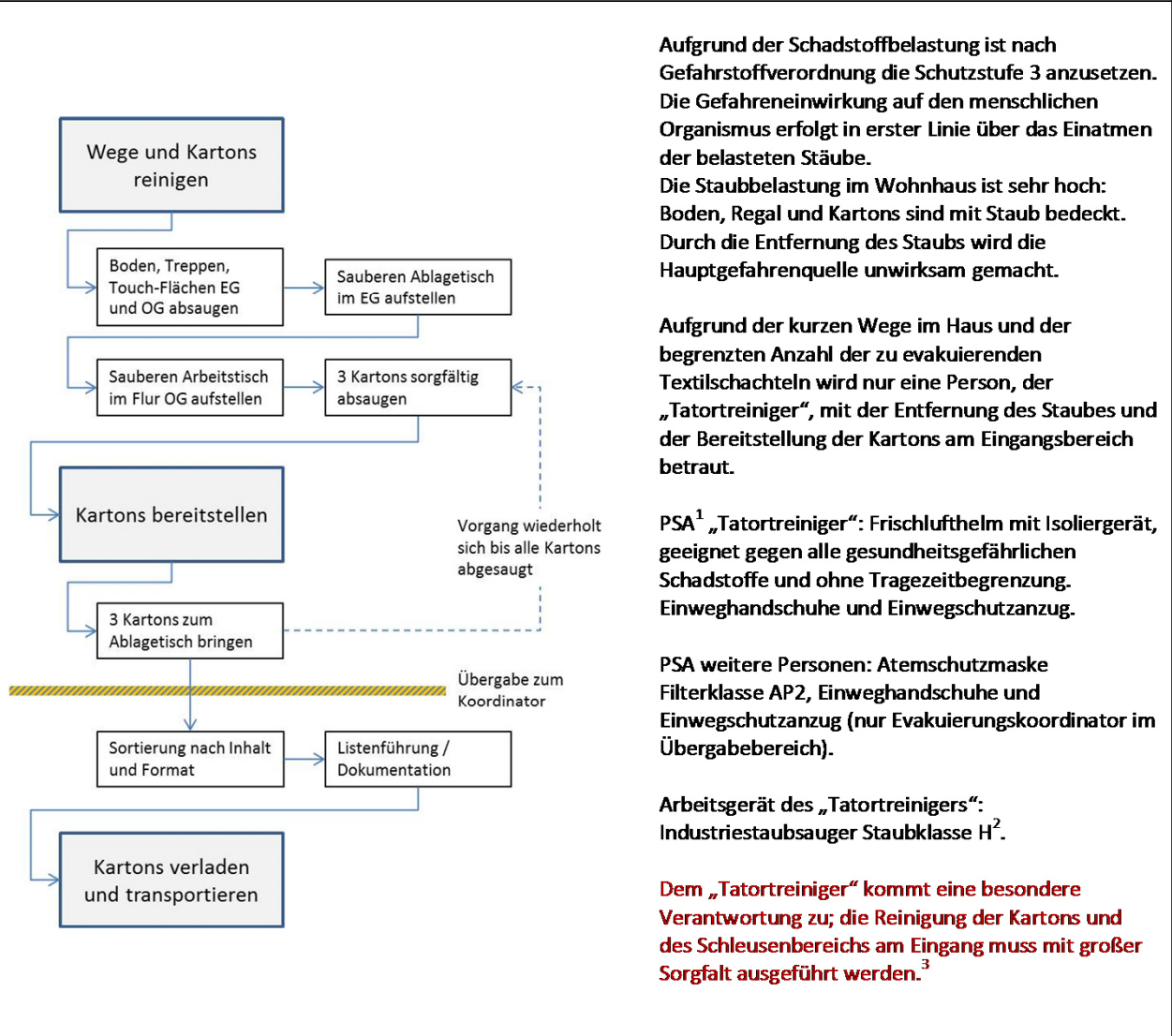
Working Circle / „Learnshop“

Clear room structure and separation of contaminated and clean areas (black-white system)

Safe workflows and safety regulations and guidance on personal protective equipment

Ablaufschema: Evakuierung des Wohnhauses auf dem Museumshof
Zuständigkeit:
 „Tatortreiniger“, Evakuierungskoordinator, Transporteur

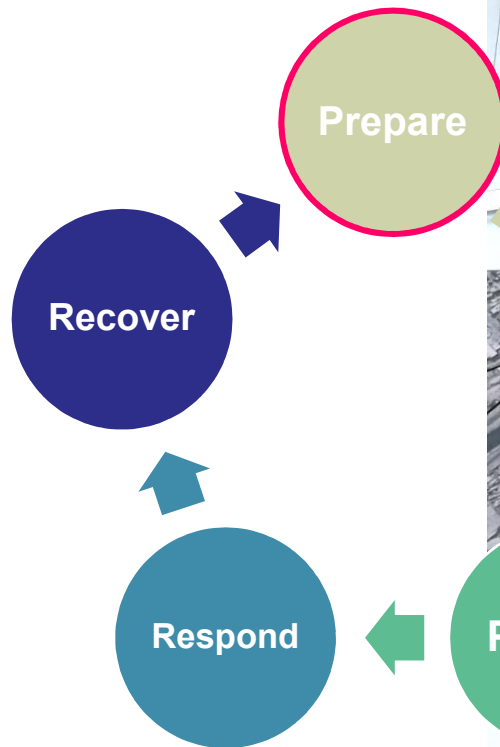
Informationen / Anmerkungen



Evacuating and safeguarding museum collections after earthquake (2018)
Simulation game held for Iraqi archaeologists within the Iraqi-German Expert
Forum on Cultural Heritage (Berlin)

Further participatory format: Simulation Game

For Disaster Resilience &
Emergency Preparedness



Integrate into intersectoral cluster system (OCHA)

Emergency Management - Be part of the system!

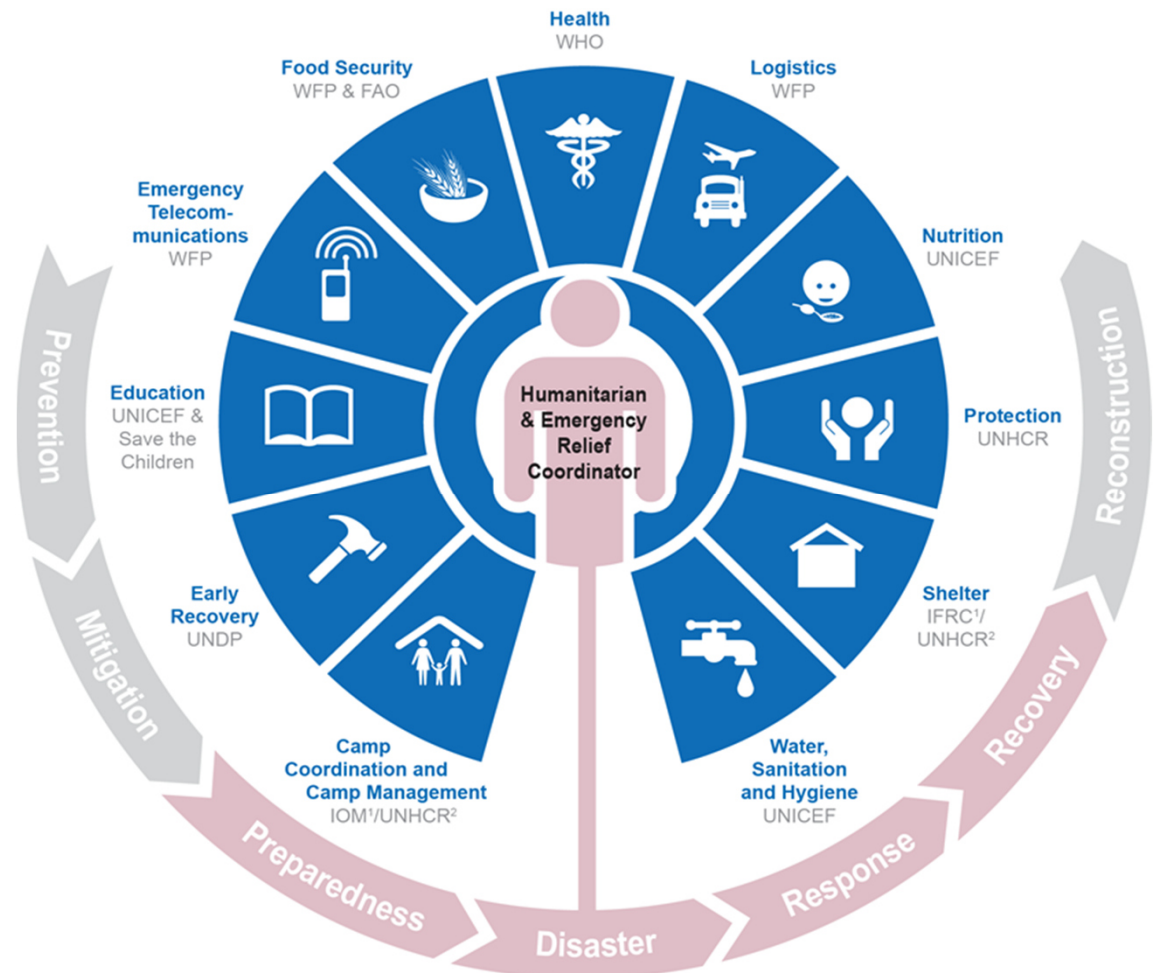
First, think of the well-being of your staff and provide post disaster relief

Learn how emergency responders and help agencies work and on what they focus in the early recovery phase.

Help agencies seek to collaborate closely with the public administration – as public institution museums, archives and cultural heritage administrations have a direct link to local authorities.

Is there any opportunity to offer help and in turn receive support?

Make clear how culture can support social recovery, and what aspects are important regarding reconstruction projects!



Connecting, communicating and cooperating is key to a successful implementation of safe work and collection care.

Team:

Maruchi Yoshida

Conservator & Safety Engineer

Simon Kirnberger

Safety Engineer at the Municipality of Munich & Vocational educator (TUM)

Dr. habil. Zuzana Giertlová

Engineer for Fire Safety Planning and Consulting & University Lecturer (TUM)



CONTACT:

Maruchi Yoshida

+49 89 307 869 89

myo@yoshida-conservation.eu

www.yoshida-conservation.eu

